



P.O. Box 67 Mt. Hope, OH 44660  
1-800-676-7734

# Antenna Extension Kit

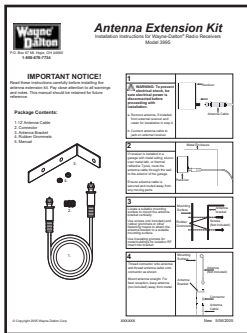
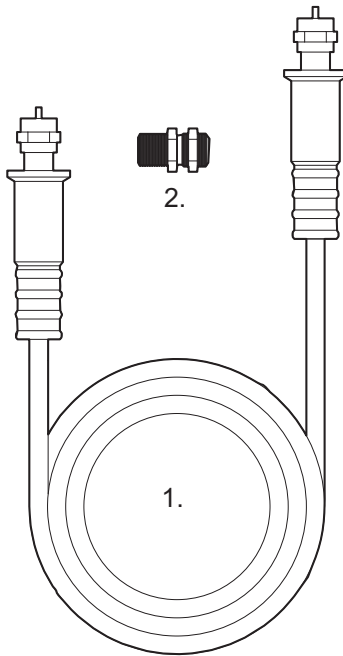
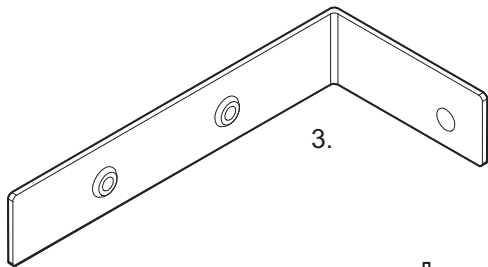
Installation Instructions for Model 3995  
for use with Wayne-Dalton® Radio Receivers

## IMPORTANT NOTICE!

Read these instructions carefully before installing the antenna extension kit. Pay close attention to all warnings and notes. This manual should be retained for future reference.

### Package Contents:

1. 12' Antenna Cable
2. Connector
3. Antenna Bracket with Rubber Grommets
4. Manual



**1**

**WARNING:** To prevent electrical shock, be sure electrical power is disconnected before proceeding with installation.

a. Remove antenna, if installed, from external receiver and retain for installation in step 4.

b. Connect antenna cable to jack on external receiver.

**2**

If receiver is installed in a garage with metal siding, stucco over metal lath, or thermal reflective Tyvek, route the antenna cable through the wall to the exterior of the garage.

Ensure antenna cable is secured and routed away from any moving parts.

**3**

Locate a suitable flat mounting surface on outside of building to mount the antenna bracket vertically.

Use screws (not included) or other fastening means to attach the antenna bracket to the mounting surface.

**NOTE:** When mounting to metal buildings, make sure rubber grommets are in place and the antenna bracket does not touch the metal mounting surface. This will ensure electrical (RF) isolation and maximum signal transmission range.

**4**

Thread connector onto antenna and thread antenna cable onto connector as shown.

Mount antenna straight. For best reception, keep antenna (not included) away from metal.